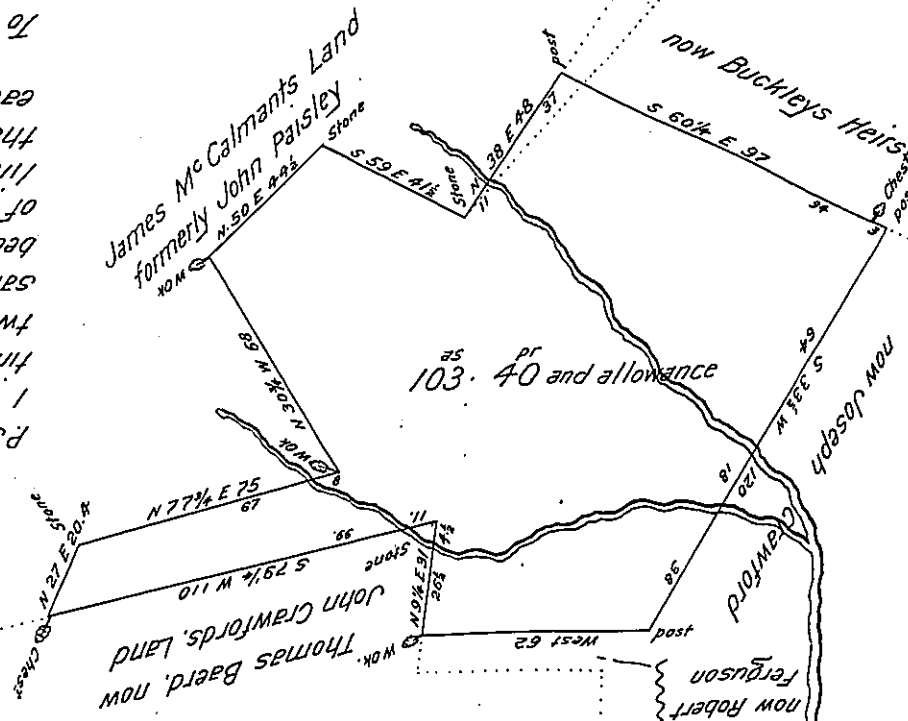


P.S. I have made use of all the means I can, as know of to enable me to distinguish what part or parts of the said two applications are enclosed in the said Survey of 103 1/4 acres. But I have been unable so to do, &c. in the survey of the 627 acres there is no division line given. And I am of the opinion that there is no official survey of each application.

James Calwell D.S.
To Jacob Spangler Esq
S. G.



The above Draught Represented by the Black lines. Contains 103.40 acres & 40 perches of Land and the usual allowance of Six per Cent for Roads &c. Situated in Colerain township, Lancaster County (and is part of 627 acres & allowance, Surveyed and Return- ed to the Surveyor Generals Office, in one Draught in pursuance of two apps. viz. one the app. of David Brown No 1472 dated the 7th of May 1766, and the app. of Joshua Baldwin No 2569, and dated the 5th of April 1767) The dated lines Represent the Re- mainder of said 627 acre tract &c. And now Resurveyed for Walter B. Decks the 1st & 2nd days of June 1835

To Jacob Spangler Esq
Surveyor General of Penn^a

By James Calwell, D.S.

IN TESTIMONY that the above is a copy of the original remaining on file in the Department of Internal Affairs of Pennsylvania, made conformably to an Act of Assembly approved the 16th day of February, 1833, I have hereunto set my Hand and caused the Seal of said Department to be affixed at Harrisburg, this

thirty first day of August 1905

James C. Brown
Secretary of Internal Affairs.